

UAS Registration Fall 2009 / September 24, 2009

	Date	Head count (HC)		Credit Hours		Avg Credit Load		Full Time		Credit Load (% HC)	
			% +/-		% +/-		% +/-		% HC	>=12 cr	<12 cr
Juneau											
Fall '09	24-Sep	2,162	5.7%	14,990	7.2%	6.9	1.5%	571	26.4%	26.2%	73.8%
Fall '08	25-Sep	2,046	1.8%	13,982	1.5%	6.8	-0.4%			24.9%	67.6%
Fall '07	27-Sep	2,009	-5.7%	13,778	-10.9%	6.9	-6.1%			25.9%	66.3%
Fall '06	21-Sep	2,130		15,464		7.3				29.0%	59.0%
Ketchikan											
Fall '09	24-Sep	533	2.5%	2,611	1.4%	4.9	10.9%	24	4.5%	5.6%	84.6%
Fall '08	25-Sep	520	-0.8%	2,575	16.3%	4.4	4.5%			6.5%	92.7%
Fall '07	27-Sep	524	12.4%	2,214	2.9%	4.2	-8.1%			6.7%	80.9%
Fall '06	21-Sep	466		2,151		4.6				8.0%	86.0%
Sitka											
Fall '09	24-Sep	905	-4.3%	4,252	9.4%	4.7	14.4%	14	1.5%	5.0%	92.6%
Fall '08	25-Sep	946	1.6%	3,885	-0.1%	4.1	-1.7%			4.0%	79.5%
Fall '07	27-Sep	931	-7.5%	3,889	11.3%	4.2	19.3%			8.4%	75.0%
Fall '06	21-Sep	1,006		3,494		3.5				5.0%	66.0%
UAS											
Fall '09	24-Sep	3,260	10.4%	22,495	11.9%	6.9	1.3%	748	22.9%		
Fall '08	25-Sep	2,953	-0.1%	20,108	0.4%	6.8	0.5%				
Fall '07	27-Sep	2,955	-1.9%	20,028	-3.6%	6.8	14.9%				
Fall '06	21-Sep	3,012		20,773		5.9					

Notes

Data extracted 9/24/09 5:00 PM

Data source: Banner SFR2ENR with population selections (Application Registration, Selection ID Reg_By_Date, Creator ANPKI; =>hrs_by_camp_level, Creator INSRL).
SGB2STN

Priority registration opened for Fall 2007 on April 2, 2007, for Fall 2008 on April 7, 2008, and for Fall 2009 on April 6, 2009.
Registration opened for all students for Fall 2007 on April 13, 2007, for Fall 2008 on April 21, 2008, and for Fall 2009 on April 20, 2009.
Classes started for Fall 2007 on August 30, 2007, for Fall 2008 on August 27, 2008, and will start for Fall 2009 on September 3, 2009.

Enrollment Day dates are 4/18/07, 5/15/07, 6/16/07, and 8/9/07; 4/24/08, 5/30/08, and 6/21/08; 4/23/09, 6/6/09, and 8/12/09.

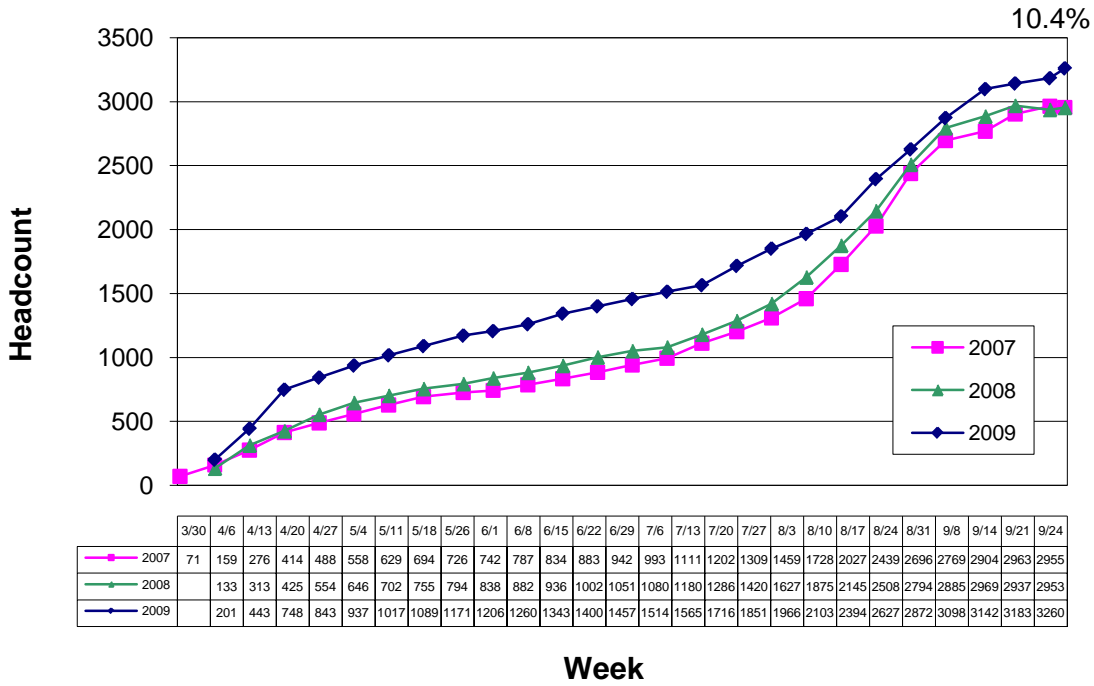
Two statistical freeze dates are set statewide for each semester: "opening" for the semester start and closing for the semester end. Statistics for the beginning of a semester are not reported beyond the "Open" freeze date (September 27 for Fall 2007, September 25 for Fall 2008, and September 24, 2009 for Fall 2009).

"Full Time" refers to undergraduate degree-seeking students with 12 or more credits and graduate students with 9 or more credits.

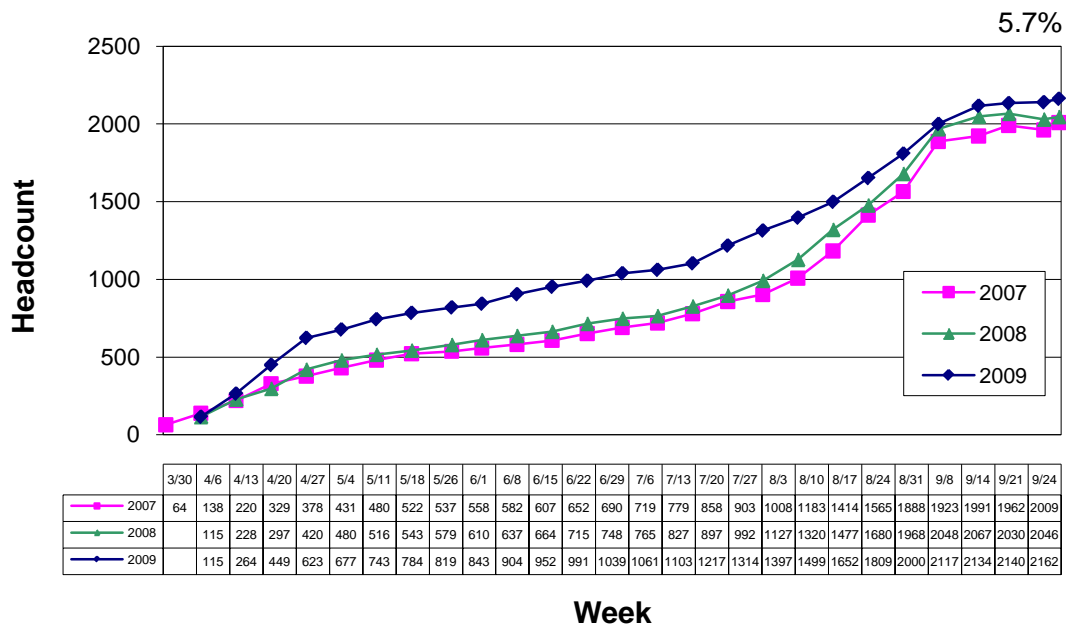
"Credit load" refers to a credit load of 12 or more credits, and "Part Time" refers to a credit load of less than 12 credits, regardless of student level or degree seeking status.

The UAS headcount and credit load is not equal to the sum across UAS campuses because some UAS students take classes at more than one campus.

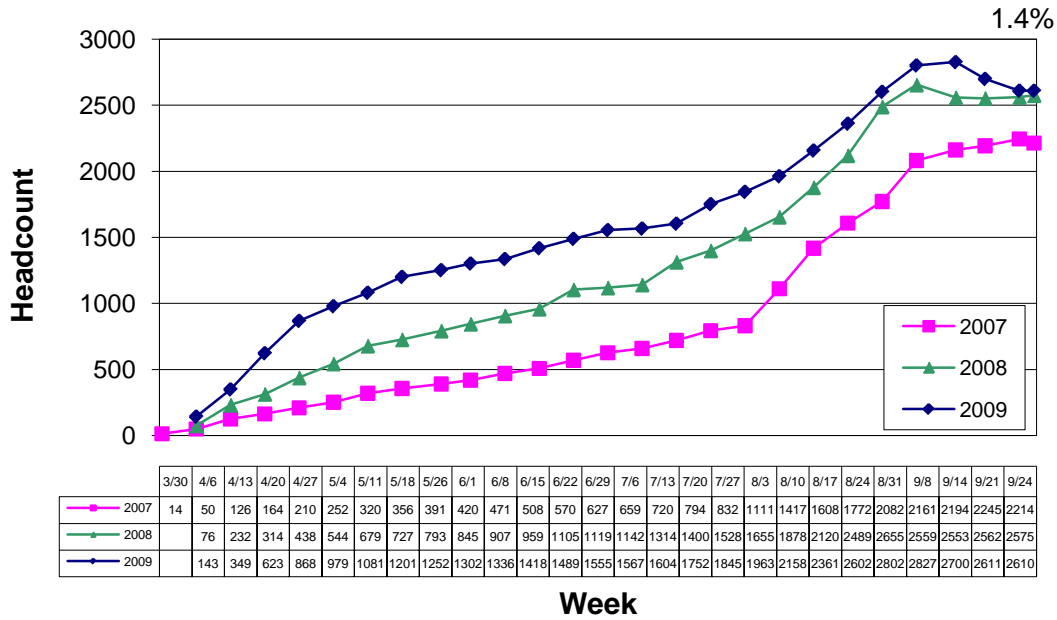
UAS Registration / Fall 2009 / September 24, 2009



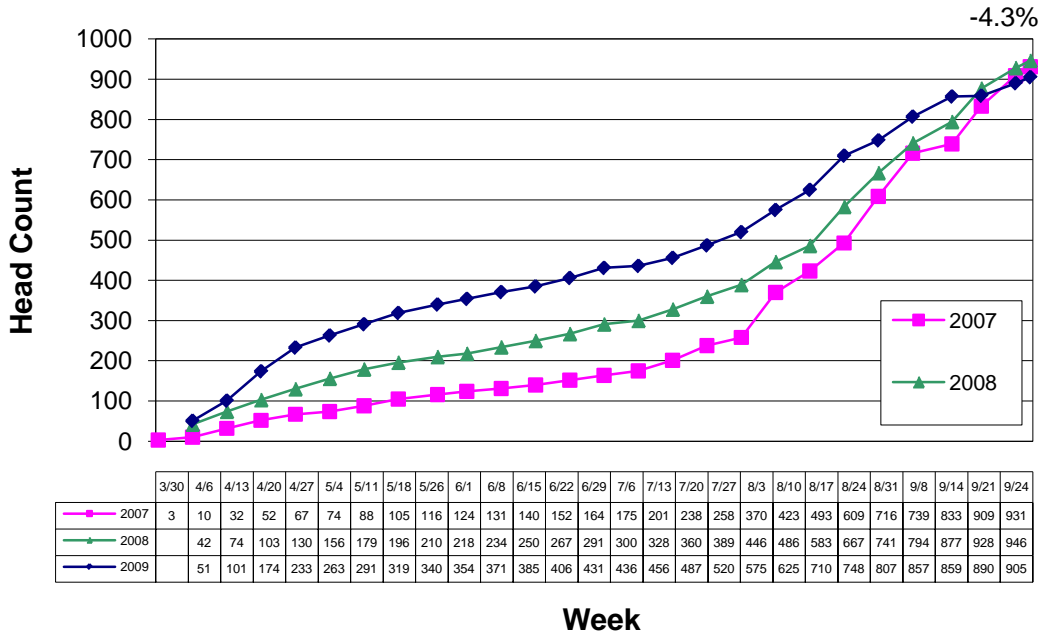
Juneau Registration / Fall 2009 / September 24, 2009



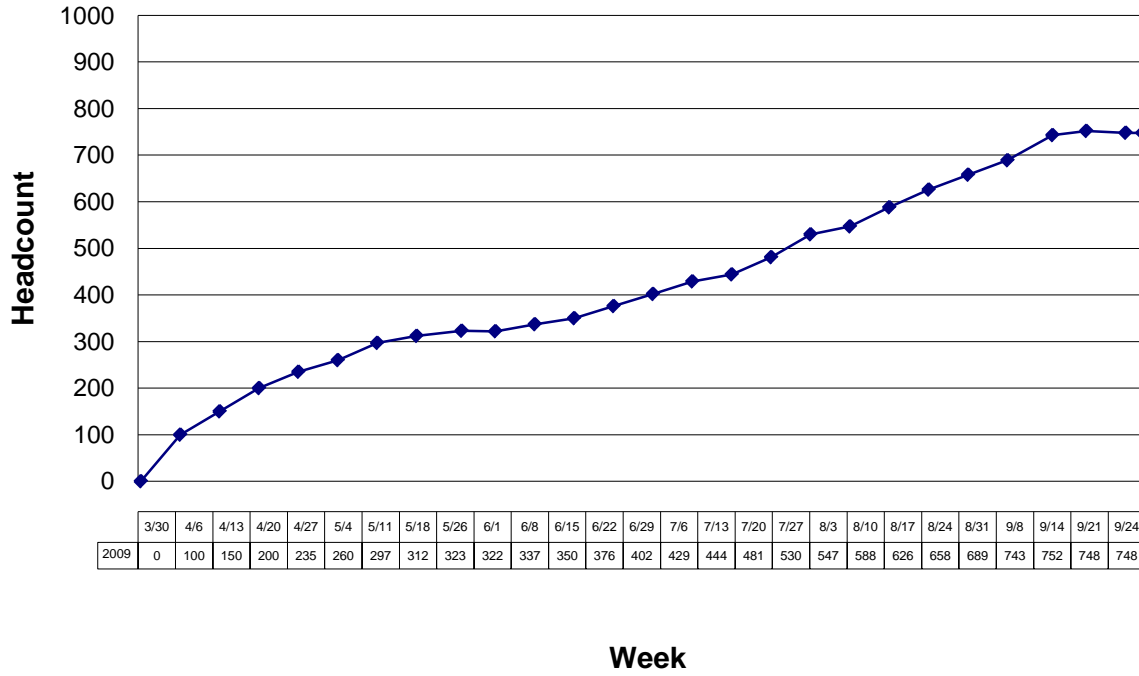
Ketchikan Registration / Fall 2009 / September 24, 2009



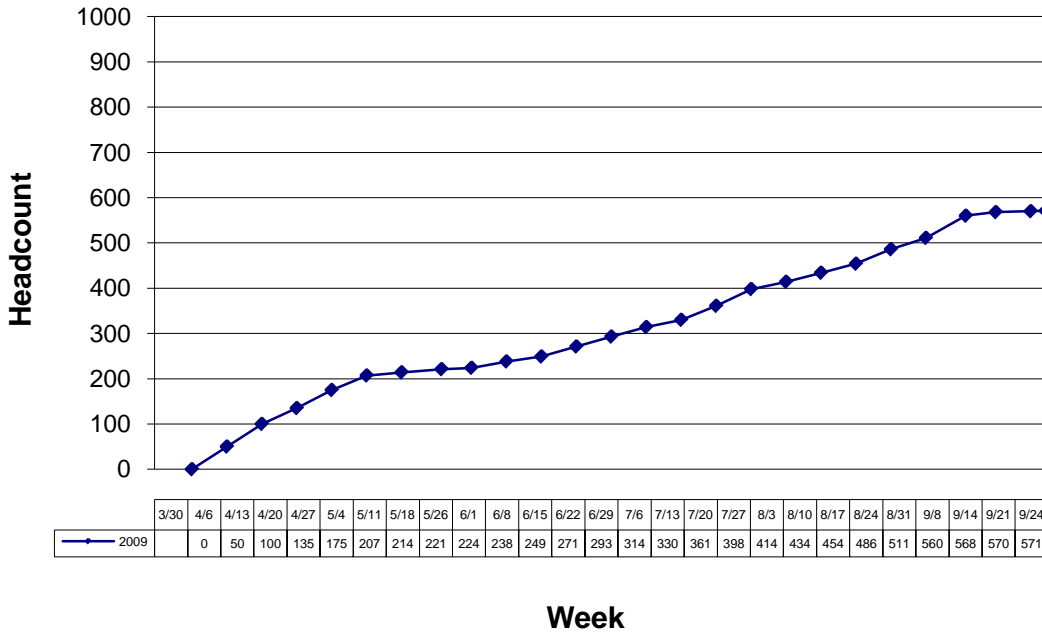
Sitka Registration / Fall 2009 / September 24, 2009



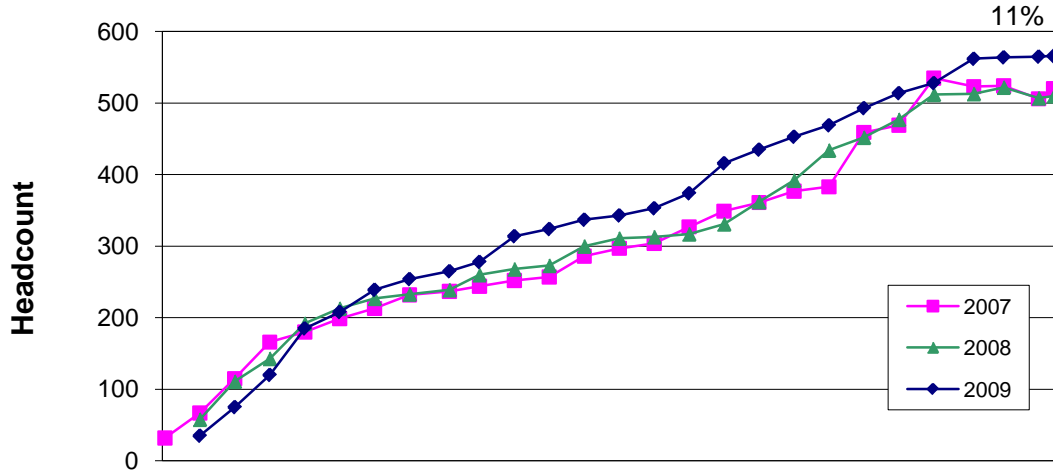
Full-time UAS Students / Fall 2009 / September 24, 2009



Full-time Juneau Students / Fall 2009 / September 24, 2009



Juneau Students with 12 or More Credits / Fall 2009 / September 24, 2009



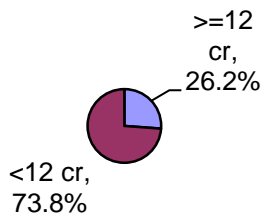
	3/30	4/6	4/13	4/20	4/27	5/4	5/11	5/18	5/26	6/1	6/8	6/15	6/22	6/29	7/6	7/13	7/20	7/27	8/3	8/10	8/17	8/24	8/31	9/8	9/14	9/21	9/24
2007	32	67	115	166	180	199	213	232	237	244	252	257	286	297	304	327	349	361	377	383	459	469	535	523	524	506	520
2008		58	111	143	192	213	227	233	239	260	268	273	300	311	313	317	331	362	392	434	452	477	512	513	522	507	510
2009		35	75	120	185	208	239	254	265	278	314	324	337	343	353	374	416	435	453	469	493	514	528	562	564	565	566

Week

11%

Proportion of Juneau Students by course load

September 24, 2009



September 25, 2008

